

800 N. Bell Ave.
 Building 6, Suite 100
 Carnegie, PA 15106
 412-429-2141 • 877-535-7717
 www.kdlog.com



Volume 1, Issue 4

Thank you for doing business with KDL Happy New Year!



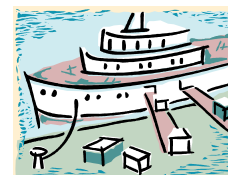
Customer Highlight

KDL has been selected by **Tinnerman Palnut Engineered Products, Inc.** to manage their U.S. Less Than Truckload (LTL) services. Under the terms of the agreement, KDL will provide **Tinnerman** with Logistics Management Solutions for domestic supply chain functions including technology and business intelligence applications that will help support their shipping requirements.

Headquartered in Brunswick, OH, **Tinnerman** was founded in 1870. **Tinnerman** is a manufacturer of fastener products including spring steel, multi- and single-thread, and clamps and cable clips. They serve customers in the automotive, appliance, and industrial markets.

Ocean Freight Rate Increase

The Transportation Stabilization Agreement (TSA) container carrier group announced plans to raise freight rates and restore fuel surcharges to offset the surging oil prices. These oil prices have risen 34% in the first nine months of 2007. Along with increased freight rates, inland rail and truck charges, and port handling fees are also expected to rise.



World Trade

Operations Turn Green

Turning green has become a trend in many distribution operations. It isn't just good for the environment, it also good for business.

An overwhelming 70% of respondents stated they will be evaluating more environmental issues in the next 12 months, while 7% are not at all likely.

About 54% of managers of distribution operations have turned to the use of lighting and fans to promote cooling, while 38% are using more environmentally friendly lift trucks.

Logistics Management

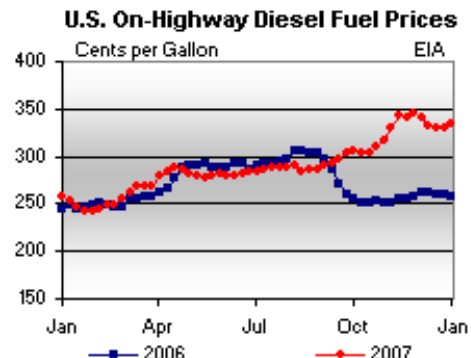
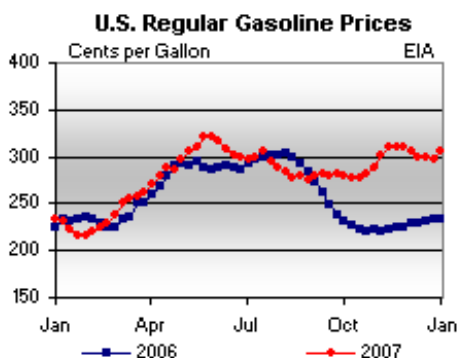
KDL Expands Customer Base

KDL has concluded 2007 signing 22 new accounts!

- Manuli Hydraulics—Pittsburgh, PA
- Flexaust Company—Warsaw, IN
- JGB Enterprises—Liverpool, NY
- American Thermoplastics—Pittsburgh, PA
- Anderson Quality Spring Manufacturing—Oregon City, OR
- Tinnerman Palnut Engineered Products—Brunswick, OH

KDL looks forward to serving and continuing to serve all of our many loyal customers in 2008.

U.S. Gasoline and Diesel Fuel Prices, 12/31/07



New Technology—Tracking and Tracing

Have you ever wished you could have a magic mirror or crystal ball that could allow you to maintain visibility of products in and out of your facilities? Well now you can! KDL's Track and Trace module of our TMS will allow users to view in transit information regarding each shipment. Each time a carrier scans a pallet, or updates their network regarding a shipment, KDL will receive a status message for a user to view.

These are the types of questions that the Track and Trace module allow a user to answer quickly and easily.

- Where in route is my shipment?
- Is my shipment going to be on time?
- Is my shipment delayed?
- Where is it delayed?
- Has it delivered?
- Was it on time?

Each time a status message is received from the carrier, that message will be stored in a historical table so that upon delivery, the entire shipping cycle can be viewed from start to finish. What better way to keep track of your in transit inventory than by keeping it in your sight!

If this sounds like something your company would like to take advantage of, give KDL a call at 412-429-2179 or email elster@kdlog.com for more information!

New Employees

KDL is pleased to announce the promotion of **Chris Otto** to Logistics Account Manager. Chris joined KDL in May 2007 as an LTL Dispatcher working in the Transportation Department. Chris's rapid development in understanding KDL'S core competency of LTL Freight Management allowed him to progress to Account Manager Status in a short time.

KDL has also hired two interns. **Andrew Baker** is studying Supply Chain Management and Information Systems Management at Duquesne University. He is assisting in the Truckload Department.

Joe Stoy is studying Finance and General Management at the University of Pittsburgh. He is assisting in the International Department.

Pro Number	Delivery Date	POD	Client SO ID	Order #	Gold Sales Order	PO #
708572346069	9/18/2007 8:55:00 AM	L.ROBINSON	0082752790	8927400	0968998443	MAT
708572346058	9/18/2007 8:55:00 AM	L.ROBINSON	0082752790	8927400	0968998443	MAT
708572346047	9/18/2007 8:55:00 AM	L.ROBINSON	0082752790	8927400	0968998443	MAT
708572346014	9/18/2007 8:55:00 AM	L.ROBINSON	0082752790	8927400	0968998443	MAT
708572345978	9/18/2007 8:55:00 AM	L.ROBINSON	0082752790	8927400	0968998443	MAT
708572345945	9/18/2007 8:55:00 AM	L.ROBINSON				
708572345934	9/18/2007 8:55:00 AM	L.ROBINSON				

Detailed Results

Tracking number	1447286606	Purchase order number	013610784144					
Signed for by	LEN	Bill of lading number	986622933					
Pick up date	Jul 28, 2007	Location	MEMPHIS, TN					
		Location	DES PLAINES, IL					
		Weight	FedEx Freight Regional 121.0 lbs.					
Events	Date Time	Time Code	Name	City	State	Description	Location	Details
AF	9/13/2007 4:10:00 PM	PT		LIVONIA	MI	CARRIER DEPARTED PICK-UP LOCATION WITH SHIPMENT		
X4	9/13/2007 5:34:00 PM	PT		DETROIT	MI	ARRIVED AT TERMINAL LOCATION		
X4	9/13/2007 11:10:00 PM	PT		FORT WAYNE	IN	ARRIVED AT TERMINAL LOCATION		
X4	9/14/2007 5:30:00 AM	PT		COLUMBUS	IN	ARRIVED AT TERMINAL LOCATION		
	9/15/2007 11:34:00 AM	PT		COLUMBUS	IN			
D1	9/17/2007 11:28:00 AM	PT		COLUMBUS	IN	COMPLETED UNLOADING AT DELIVERY LOCATION		
	9:10 AM			At local facility			DES PLAINES, IL	Manifest Number 419000025555
	9:10 AM			At local facility			DES PLAINES, IL	Manifest Number 419000025555
	3:53 AM			At local facility			DES PLAINES, IL	
	12:41 AM			In transit			LINCOLN, IL	
	7:00 AM			In transit			MEMPHIS, TN	
	2:49 AM			Shipment exception			MEMPHIS, TN	Shipper tendered late - adds one day to transit time Appointment Date Aug 01, 2007 and Time 04:00 PM Set
	2:48 AM			Delivery exception			DES PLAINES, IL	
	1:12 AM			Picked up			MEMPHIS, TN	